

# TM 3D Vision™

## The Evolution of Machine Vision

A Plug&Use 3D Vision Solution ; No Integrating Efforts Needed



## TM 3D Vision™

### Product Features

- Pre-integrated into TM Robot's vision system
- All 3D vision functions, controls, and visual task deployment can be completed in TMflow™, no need to install or learn new software
- No external vision controller necessary
- Two types of compatible 3D camera for users to choose from

▪ Please scan the QR Codes for more camera details



IDS Ensenso N35  
3D Camera

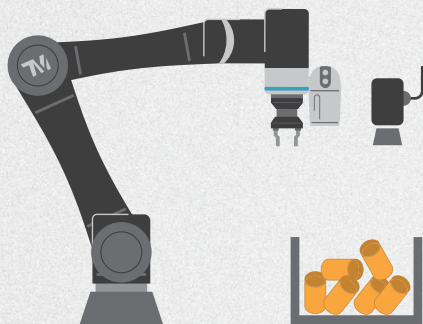


TM Compact  
3D Camera



## Easily Deploy Your Own TM 3DVision™ Tasks in TMflow™

TMflow™ is TM Robot's programming software, and TM 3DVision™ is a software add-on that can be used in TMflow™. Users can effortlessly achieve robot control and deploy 3D vision tasks all in one robot software.



Calibration



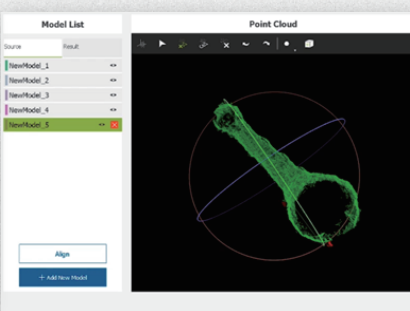
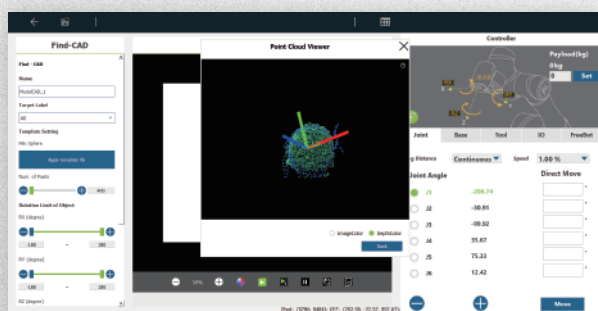
Modeling



Task Editing

## Step by Step Instructions to Build a Vision Task

TM 3DVision™ is designed with a process-oriented user interface. Simply follow the instructions in TMflow™ and it will guide you through all steps of building a 3D vision task such as object modeling, camera calibration, and object finding.



### Find

Using geometry shapes (EX: box, sphere), CAD model or point pose as reference pattern to find the object

### Modeling

Use the 3D camera to perform modeling or use pre-defined CAD models

### Clustering

Use certain algorithm to separate the point cloud of the objects into several smaller groups. This will reduce the calculating efforts and speed up the process

## Application Videos of TM 3DVision™:



Please visit Techman Robot official website for more information about the compatible 3D camera of TM 3DVision™ solution.